

REPAIR INSTRUCTIONS NO. RI-GROB-002

I. TECHNICAL DETAILS

1. Aircraft affected:

Model	LBA TCDS	EASA TCDS	FAA TCDS
G 115 (incl. A/C modified to G115B)	1078	EASA.A.364	A57EU
G 115A (incl. A/C modified to G115B)	1078	EASA.A.364	A57EU
G 115C	1078	EASA.A.364	A57EU
G 115C2	1078	EASA.A.364	A57EU
G 115D	1078	EASA.A.364	A57EU
G 115D2	1078	EASA.A.364	A57EU
G 115E	1078	EASA.A.364	
G 115EG	1078	EASA.A.364	A57EU
G 115TA	1078	EASA.A.364	
G 120A	1121	TCDS A.075	A49CE
G 120A-I	1121	TCDS A.075	A49CE
G 120A-C	1121	TCDS A.075	
G 120A-F	1121	TCDS A.075	

2 Subject:

ATA-Code: 51-00
Standard Practices and Structures – General -
Repair of engine baffles

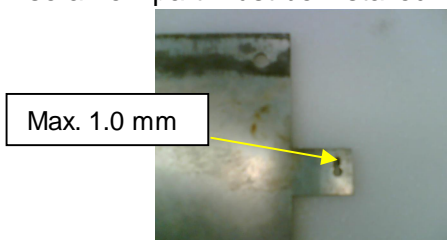
3. Introduction

During regular maintenance it was found, that engine baffles might be damaged by the attached tension spring. This Repair Instruction gives information of an approved repair.

4. Accomplishment/ Instructions

- 4.1. Make sure the aircraft is safe for parking I.A.W. Maintenance Manual (MM), Chapter 10-10 (for G 115EG use JG in analogy).
- 4.2. Remove upper and lower engine cowling I.A.W. MM, Chapter 71-10.
- 4.3. Remove the concerned engine cooling baffle I.A.W. MM, Chapter 71-60.

- 4.4. Check item for extent of damage. If the damage is not more than 1.0 mm, the item can be repaired. Otherwise a new part must be installed.



Note: New engine cooling baffles with rivet installed may have a changed P/N.

- 4.5. Drill up carefully hole to 4 mm. Deburr drilling.
- 4.6. Install rivet P/N DIN 7340-4x1x4, (4mm long) using a standard riveting tool.
- 4.7. Install the concerned engine cooling baffle I.A.W. MM, Chapter 71-60.
- 4.8. Remove upper and lower engine cowling I.A.W. MM, Chapter 71-10.
- 4.9. Return aircraft back to service with the required paperwork.

5. Approval Note:

The technical information contained in this document has been approved under the authority of EASA Design Organisation Approval No. EASA.21J.030.

6. Mass (Weight) and CG:

N/A

II. PLANNING INFORMATION

7. Material & Availability:

For repair:

- tubular rivet P/N DIN 7340, 1.4301, 4x1x4, (4 mm long)

Further required material may be ordered on request under
<http://www.grob-aircraft.eu/service-and-support/general/order-form.html>

8. Special tools:

N/A

III. REMARKS

1. The installation may be performed by a qualified tradesman and has to be certified in the logbook by an authorised inspector.
2. The Maintenance Manual will be amended with the next revision to include the repair procedure. The Illustrated Parts Catalogue will be amended to reflect the correct part numbers and installation positions.
3. If you have sold your aircraft in the meantime, would you kindly pass this information on to the new owner and forward his address and aircraft S/N to us.
4. For further assistance please contact:

Rudolf Vodermeier, Head of Customer Service & Support
Tel.: +49 8268 998139
Fax: +49 8268 998200
e-mail: productsupport@grob-aircraft.com
homepage: www.grob-aircraft.com