



SERVICE BULLETIN NO. MSB4601-7/3

I. TECHNICAL DETAILS

1.1 Category:

Mandatory

1.2 Aircraft affected:

Aircraft engine GROB 2500 E1/ D1 all S/N's

1.3 Time of Compliance:

During repair/ replacement every 500 hours

1.4 Subject:

ATA-Code: 73-20
Engine, Fuel and Control

1.5 Reason:

The float needle valves P/N B.19052 are no longer available. The carburetor manufacturer offers alternative float needle valves.

1.6 Concurrent documents:

Operations Manual Aircraft Engine GROB 2500

1.7 Approval Note:

These information relate to change no. MÄM4601-28 which has been approved under the authority of EASA Design Organisation Approval No. EASA.21J.030.

AIRCRAFT ENGINE GROB 2500

The technical information contained in this document has been approved under the authority of EASA Design Organisation Approval No. EASA.21J.030.

1.8 Accomplishment / Instructions

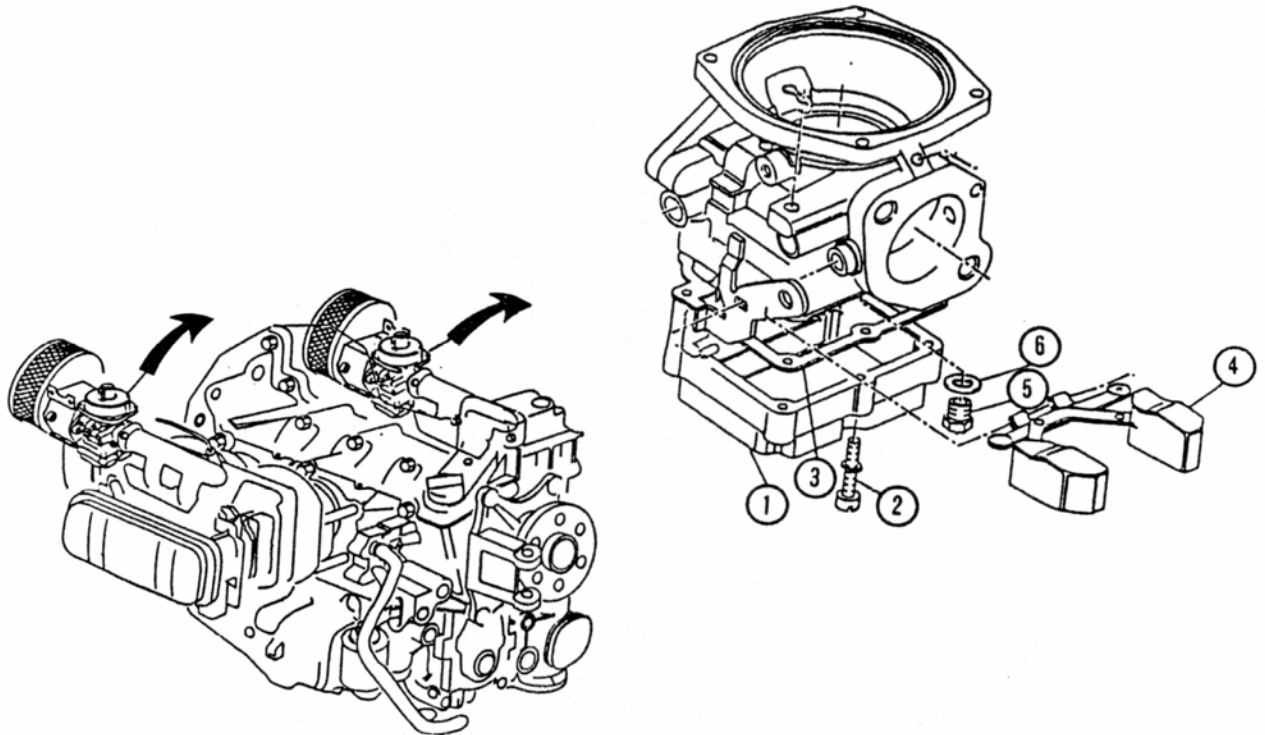
The float needle valves are to be replaced as follows:

- ensure, that the Battery Master Switch is "OFF", and the ignition key is removed
- remove upper and lower engine cowling
- remove float chamber (1) by removing 6 screws (2) with spring washer
- remove float chamber and gasket (3) downwards and drain fuel from the float chamber
- pull down float (4)
- remove needle valve (5) and gasket (6) (refer also to the "Assembly and Repair Manual GROB 2500")

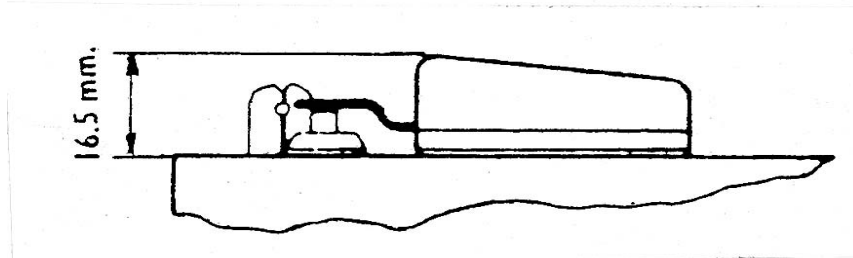
Note: The width of the hexagonal nut is 3/8" (= 13,25 mm).

- install a new alternative needle valve and a **new** gasket

REMARKS: Left and right carburetor of an engine must have the same needle valve part number.



- install float. After installation of the float needle valve and the float, set the height to 16,5 mm measured from the upper edge of the float to the edge of the casing without the float camber gasket (3). Slightly bending of the float arm is allowed.



- install float chamber using a new gasket.
- make a function test of the needle valves and check carburetors for leakage
 - a. using the electrical fuel pump
 - b. after engine ground run
- install upper and lower engine cowling
- perform an engine ground run and, if necessary, perform adjustments according to "Operations Manual GROB 2500"

1.9 Repetitive Actions

Replacement of the float needle valves every 500 hours (refer to OPERATING MANUAL AIRCRAFT ENGINE GROB 2500, Chap. 6.2.4.).

1.10 Mass (Weight) and CG:

Negligible

II. PLANNING INFORMATION

2.1 Material & Availability:

Mod Kit Float Needle Valve, Part-Number: MSB 4601-7
 (contains 2 float needle valves and required gaskets)

Description	Part-No.	Qty.
gasket float chamber	B16518	2
float needle valve*	B18355/1.5	2
or float needle valve*	B18353/1,75	2

*alternate float needle valves



Material incl. new gaskets will be shipped only in Mod Kit and can be ordered from GROB (refer to para. 3.3).

2.2 Special Tools:

N/A

2.3 Labour costs:

Replacement: 1.0 hour

2.4 Reference documents:

N/A

2.5 Credit:

N/A

III. REMARKS

- 3.1** The installation may be performed by a qualified person / an authorised aviation workshop and has to be certified in the logbook by an authorised inspector.
- 3.2** If you have sold your aircraft in the meantime, would you kindly pass this information on to the new owner and forward his address and aircraft S/N to us.
- 3.3** For questions and assistance please contact:

Rudi Vodermeier	Head of Product Support,
phone:	+49 (08268) 998 139
fax:	+49 (08268) 998 200
e-mail:	productsupport@grob-aerospace.de